

CASE STUDY

MediTrac® in Long Term Care Facility

- Saves Time
- Saves Money
- Increases Installation Options

Product: 1½" MediTrac® Corrugated Flexible Medical Tubing

Location: Lafayette, LA

Project Overview

Magnolia Estates, a long-term care facility in Lafayette, LA, was installing a new bulk oxygen system as its primary source. It was to be installed on the opposite end of the building from the current source of oxygen which was fed from a manifold with high pressure cylinders. In order to interconnect the new to the existing system, a 400' trunk line needed to be installed to connect both systems. The trunk line could only be run through the attic space of the building. The attic space posed a near impossible working environment due to its lack of size and potential for contamination and fire hazards. Jerry Duhon, who owns MGI (Medical Gas Installations), was tasked with completing the installation. At first glance, he saw that installing traditional cleaned and capped copper would require an extended number of days to complete and that the working environment for brazing was extremely susceptible to creating a potential fire hazard. Jerry sought out a solution to this problem and found that Corrugated Medical Tubing was the answer. Jerry went back to the bulk oxygen supplier and said to them: "The way I am most comfortable and really the only way I want to take on this project is with running it in MediTrac®. MediTrac® eliminates all the potential issues of working in such a cramped, crowded and potentially dangerous environment."



MediTrac® 1½" Tube and fitting connecting to oxygen new source valve line.

Installation Overview

Once the new bulk oxygen system was installed, the main oxygen line was run from the source valve to the attic with cleaned and capped copper. In order to transition from cleaned and capped copper to corrugated medical tubing, a 1½" MediTrac® straight fitting was brazed onto the downstream side of the newly installed main line valve, therefore making the simple transition from copper to corrugated medical tubing. From there, a 400' continuous reel of MediTrac® was pulled thru the attic space without any joints in between the initial and final connection points. Another 1½" MediTrac® straight fitting was brazed onto the existing main line valve and the corrugated medical tubing was connected. No purging of the MediTrac® line was required because the fittings were brazed into the existing system and then the connection was made to the MediTrac®. This saved MGI the time and costs of purging a 400' run of 1½" pipe.



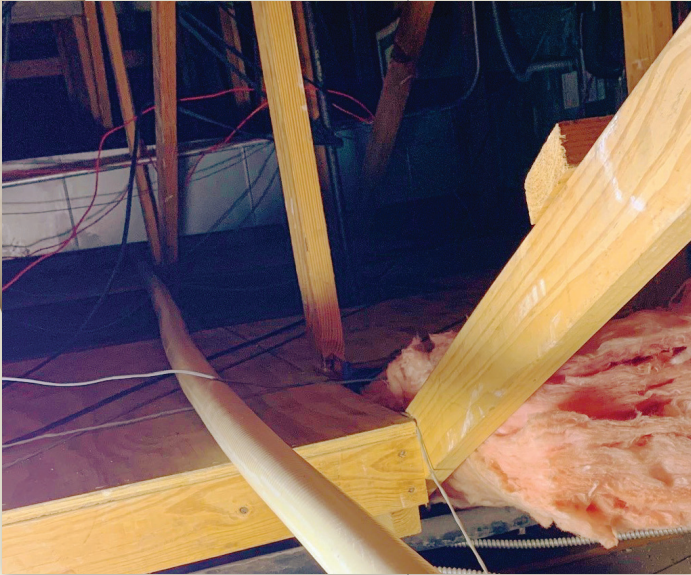
MediTrac® fitting tying into existing oxygen system.

(continued)

CASE STUDY

MediTrac[®] in Long Term Care Facility

(continued from front)



1 1/2" MediTrac[®] running through attic space.

Conclusion:

MediTrac[®] provided a safe and reliable solution to a potentially dangerous working environment. The ability to complete a 400' installation of a new oxygen main without a multitude of joints throughout the newly installed piping system was not only beneficial in the amount of time saved but also greatly reduced the risk of potential hazards. The use of MediTrac[®] minimized the need for fire watch and fire prevention materials and procedures in the attic space, creating additional safety for Magnolia Estates and MGI.

Summary of MediTrac[®] Materials:

400' of 1 1/2" Tube

(2) 1 1/2" Fittings

Summary of Cleaned and Capped Copper materials saved:

400' of 1 1/2" Type K Copper

Minimum number of fittings saved

(24) 1 1/2" copper couplings/90's/45's

Various consumable materials including but not limited to: Nitrogen purge gas, brazing rods, fire protection materials, fuel and prep materials.

Labor Man-hours estimated for Cleaned and Capped Copper

MGI estimated over 50 man-hours to complete the installation with traditional materials because of the difficult working environment.

Summary of MediTrac hours:

MGI completed the installation of the MediTrac system in a total of 8 man-hours.

Overall Efficiency Summary: The use of MediTrac allowed the project to be completed in one day rather than over 6 working days. The reduction in installation time was 84% compared to using traditional cleaned and capped copper allowing the contractor a more efficient use of time and getting Magnolia Estates operating on its new bulk oxygen system at least 5 days sooner.



Completed 400' run of MediTrac[®] under pressure test.